

## C1r Recombinant antibody

**Cat:**B36433S

**Company:** HaoKebio

**Uniprot ID:**P00736

**Applications:** IHC:1:500-1:2000

**Organism:**Rabbit

IHC-Polymer:1:2000-1:8000

**Species reactivity:**Human Mouse

IHC-TSA:1:2500-1:10000

**Molecular Weight Calculation:** 705 aa, 80 kDa

IF:1:50-1:100

**Observed Molecular Weight:** 85 kDa

WB:1:5000-1:50000

### Background:

The first component of complement is a calcium-dependent complex of the 3 subcomponents C1q, C1r, and C1s. The serine protease subunits C1r and C1s form a Ca(2+)-dependent C1s-C1r-C1r-C1s tetramer. C1r acts by transforming the activation signal into an enzymic activity. C1r is a single-chain glycoprotein that can be cleaved into an A chain and a B chain upon activation.

### Synonyms:

242596F5, Complement C1r, Complement C1r subcomponent, Complement C1r subcomponent heavy chain, Complement C1r subcomponent light chain

### Immunogen:

Recombinant protein

### Isotype:

IgG

### Subcellular location:

Cytoplasm

### Purity:

Affinity purification

### Form:

Liquid

### Storage Buffer:

PBS with 0.02% sodium azide, 100 µg/ml BSA and 50% glycerol.

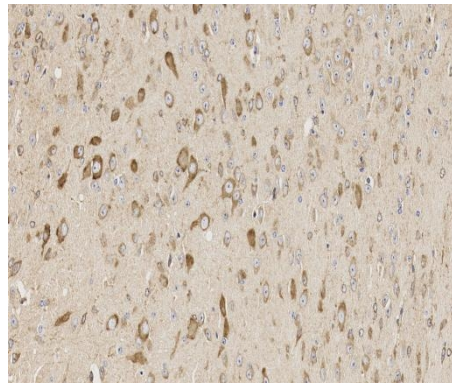
### Storage:

Store at -20 °C for one year.

### Experimental procedure:

Antigen retrieval: Citrate buffer (pH 9.0) , Medium high heat for 8 minutes, stop for 7 minutes, medium high heat for 8 minutes. Incubate antibody, 4°C overnight. Secondary antibody: Poly-HRP Goat Anti-Rabbit & Mouse Universal Secondary Antibody, RT, 1h.

### Images:



Sample: Mouse brain, 4% PFA 12-24h

### Source of Reagents:

发表[中文论文]请标注:C1r(B36433S)由杭州浩克生物技术有限公司提供;

发表[英文论文]请标注:C1r(B36433S) were kindly provided by Hangzhou Haoke Biotechnology Co., Ltd.